

Using Indirect Approaches to Regulate Youth Adolescent Sexuality in Tanzania

Presenter: Rester Boniface

Additional Author: Elisa Muhingo

**CHAMA CHA UZAZI NA MALEZI
BORA TANZANIA (UMATI)**

UMATI: An Introduction

- UMATI is a Tanzanian NGO - an IPPF affiliate
- Specializes in sexual & reproductive health (SRH) with projects all over Tanzania
- Youth and adolescent SRH in Karago and Kanembwa refugee camps.

Youth Program Overview

- Established in 2000.
- Target population of 11,000 youth between the ages of 10 to 24 years old.
- Baseline survey revealed idleness and poverty were concerns.
- Designed to provide SRH services in the Youth Center and in the community.

Mid term Evaluation

- Mid-term assessment done in late 2002.
- Showed little changes in sexual behavior.

Program Improvements

- Introduced (Kanembwa) and strengthened (Karago)
 - skills training, income generating, sports activities.
- Improved SRH sessions (both)
 - posters, playing cards and leaflets.







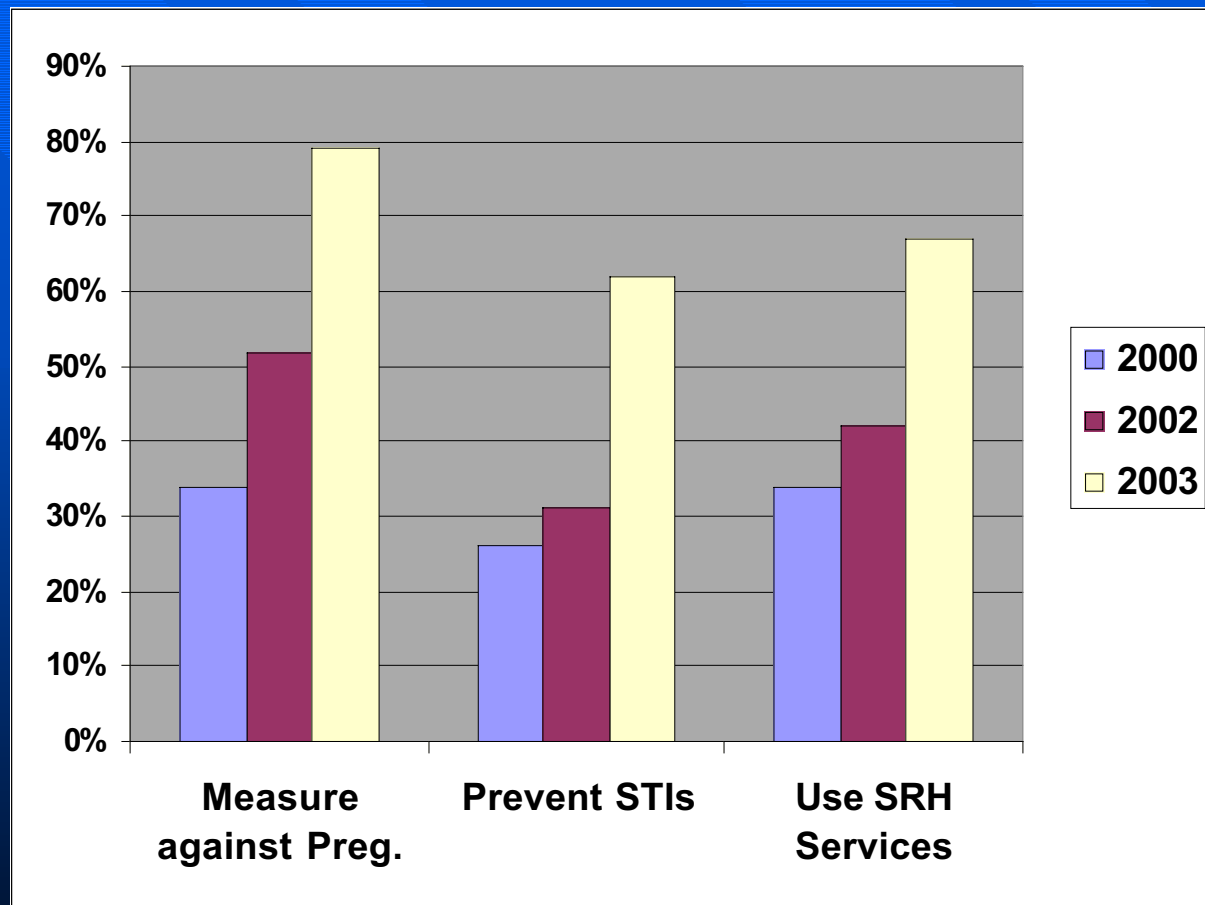
Follow-Up

- Follow-up Survey was conducted in July 2003.
- A sample of 117 from Karago and 78 in Kanembwa refugee camp were surveyed.
- The methodology included focus group discussions and administration of questionnaires

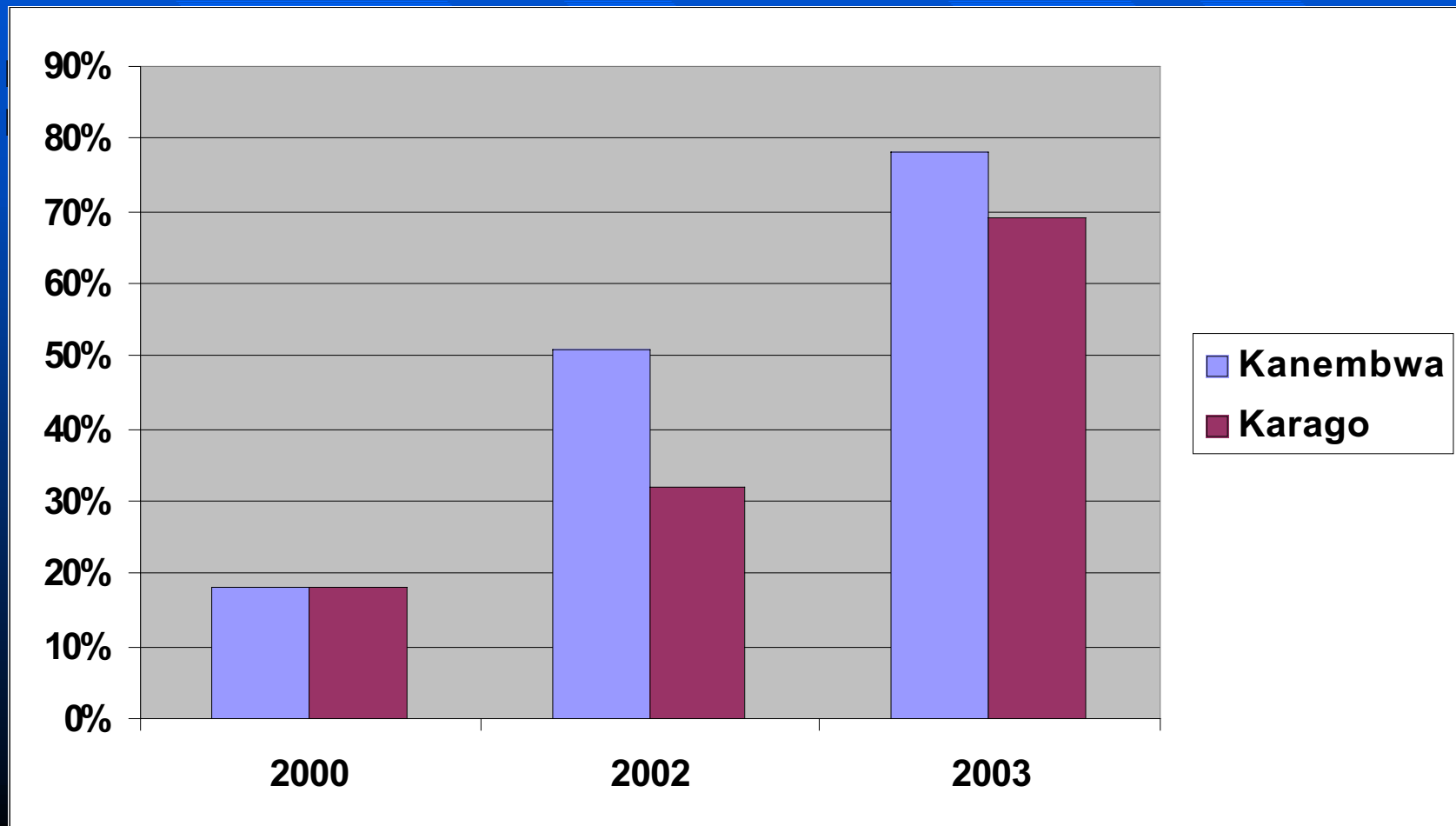
Results of 2003 Follow-Up

- More youths are involved in Income Generating Activities (IGA) and skills training.
- Knowledge and practices on various SRH issues changed positively.

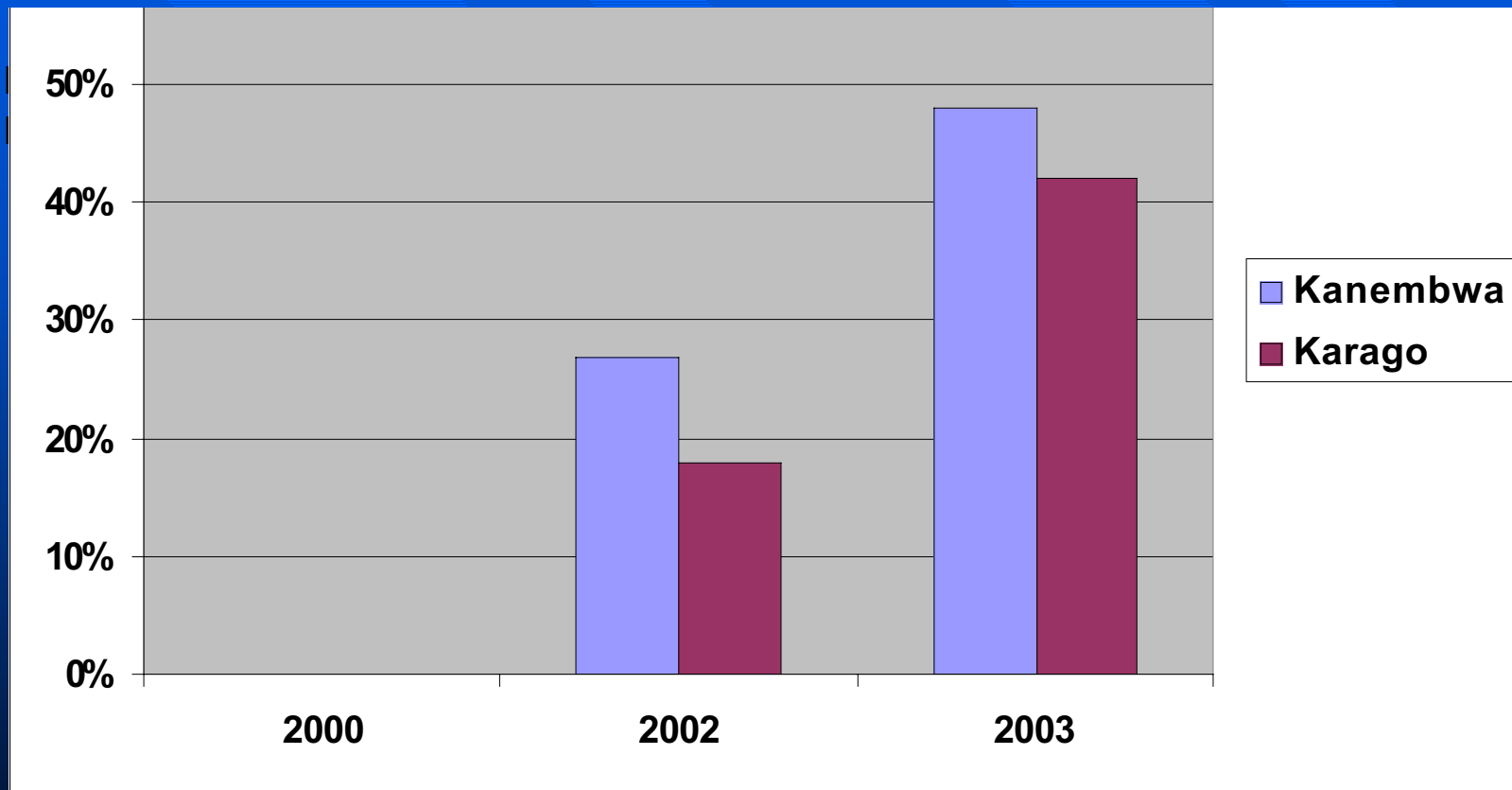
Behavior Change



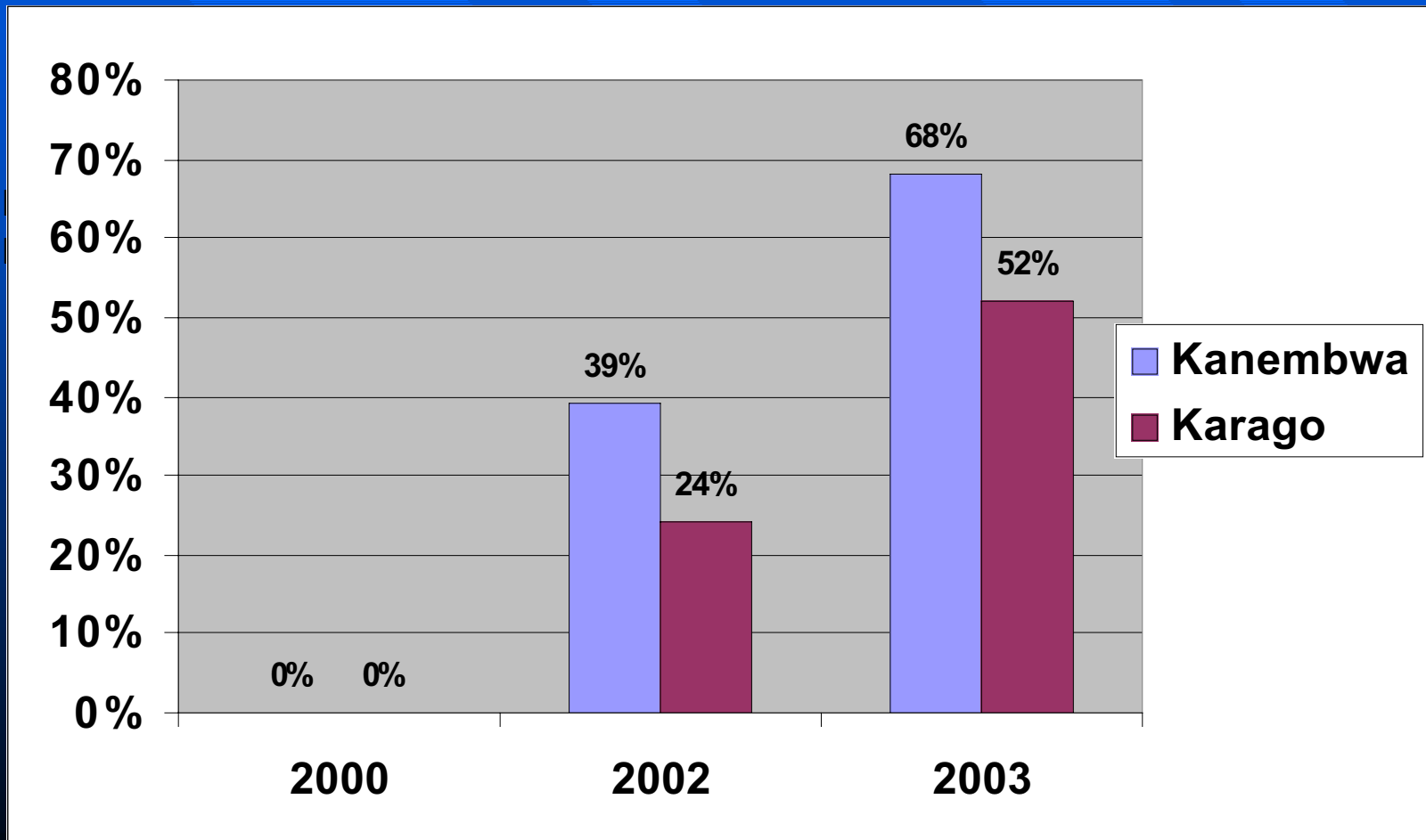
Percentage of youths mentioning more than two preventive measures against HIV/AIDS



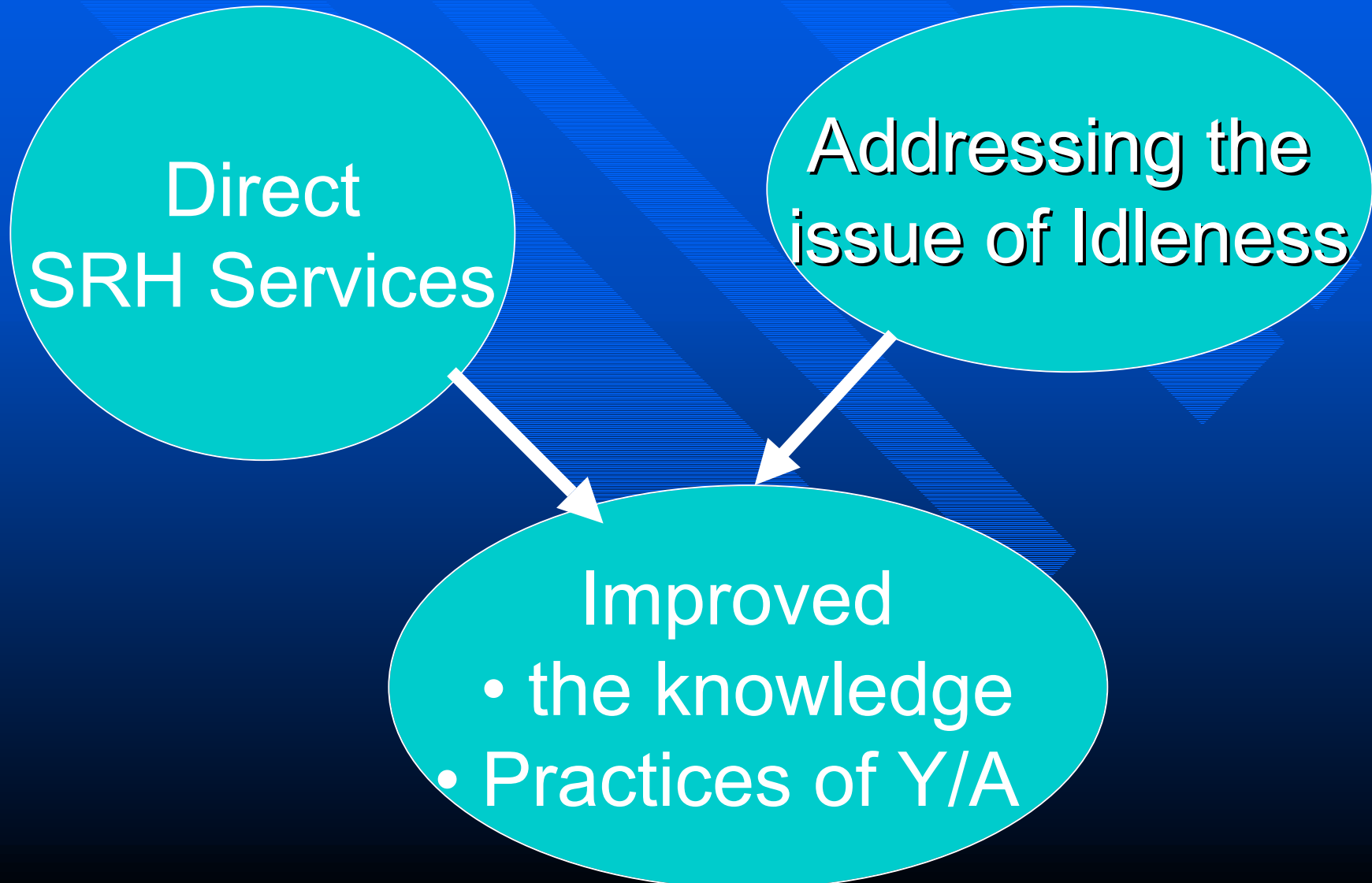
Percentage of youth expressing correct use of condom.



Percentage of youth identifying risks of pregnancies.



Conclusion



Acknowledgments

- David and Lucile Packard Foundation
- Reproductive Health for Refugees Consortium
- Heilbrunn Department of Population and Family Health, Columbia University
- JSI Research and Training Institute

Acknowledgements Cont.....

- UNICEF
- Refugee Youths in Kanembwa and Karago
- International Rescue Committee
- Jennifer Schlecht, Columbia University MPH/MSW student intern